

METAL BELLOWS

ACC-CM



APPLICATIONS

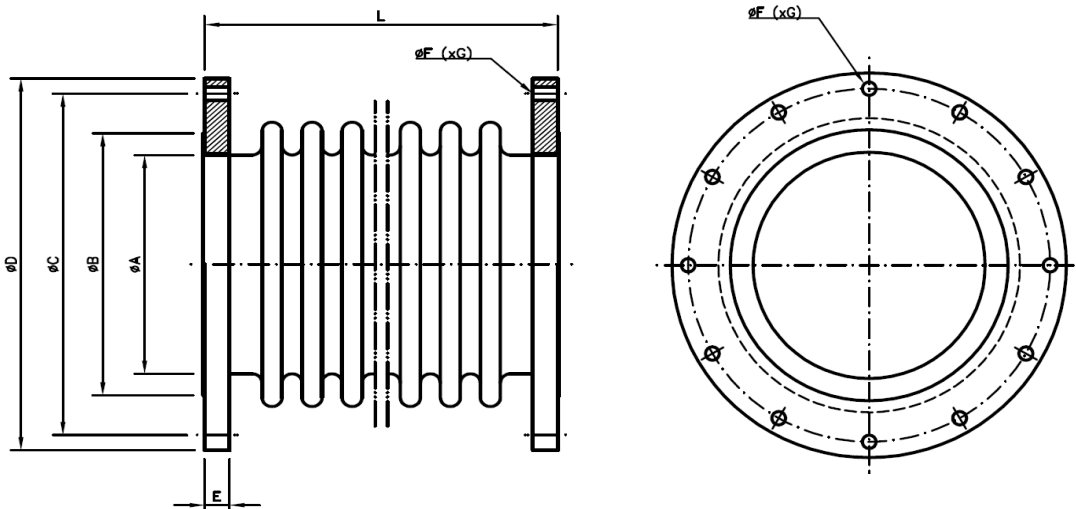
Metal bellows can be used in exhaust of diesel engines, turbines, boilers and thermal engines, generally installed on ships, in exhaust lines thermal plants, cogeneration, etc. Also in elastic connections for condensers, turbines, etc.

DESCRIPTION

- The basic element of an expansion joint is formed by the annularly corrugated metal bellows from a longitudinally welded pipe or seamless pipe in constructions of one, two or more layers. Designed and manufactured in accordance with standards EJMA.
- Bellows and jackets are made of stainless steel AISI 321. The flanges are available in carbon steel, stainless steel or other materials on request.

CHARACTERISTICS

- Working temperature from -60°C to 1200°C , from outdoor to highly corrosive environments.
- Pressure: PN (from empty) 1, 6, 10, 16, 25, 40, 64 and 100 bar.
- Duration: 1,000 cycles, 5,000, 10,000, 50,000...
- Fluids: air, exhaust gas, water vapor, acids, etc.
- Flanges, ends welded, threaded, joints, loose flanges, etc.
- On request, welding according to UNE-EN-15085



METAL BELLOWS

ACC-CM

TECHNICAL CHARACTERISTICS

Pos.	DN	Axial Movement +/-	Lateral Movement +/-	Length (mm)
1	100	34	18	205
2	100	60	60	360
3	125	55	26	240
4	125	80	50	325
5	150	33	9	160
6	150	50	21	225
7	150	75	42	305
8	200	27	4	155
9	200	35	5	170
10	200	45	10	210
11	200	65	20	265
12	200	90	35	335
13	250	20	2	150
14	250	30	3	170
15	250	45	10	220
16	250	60	18	260
17	250	90	35	360
18	300	20	1,5	155
19	300	30	2,5	175
20	300	60	11	255
21	300	85	28	365
22	350	25	2	160
23	350	65	13	270
24	350	90	27	360
25	400	30	4	190
26	400	40	6	210
27	400	60	10	260
28	400	75	15	310
29	400	90	22	360
30	450	30	3	195
31	450	50	7	240
32	450	65	11	290
33	450	80	18	350
34	500	30	3	205

Pos.	DN	Axial Movement +/-	Lateral Movement +/-	Length (mm)
35	500	50	8	260
36	500	80	14	320
37	500	90	18	360
38	550	30	3	210
39	550	50	8	265
40	550	80	14	320
41	550	90	18	350
42	600	40	4	220
43	600	60	8	270
44	600	80	14	330
45	600	90	18	360
46	700	45	3	220
47	700	65	8	290
48	700	90	15	350
49	800	35	2	210
50	800	60	6	280
51	800	85	12	340
52	900	40	3	210
53	900	65	6	280
54	900	90	12	340
55	1000	40	3	210
56	1000	55	6	290
57	1000	80	10	320
58	1100	40	3	220
59	1100	65	6	300
60	1100	90	10	330
61	1200	40	3	230
62	1200	50	6	270
63	1200	75	10	340
64	1300	40	3	220
65	1300	75	6	335
66	1400	40	3	220
67	1400	75	6	335
68	3000	80	10	550