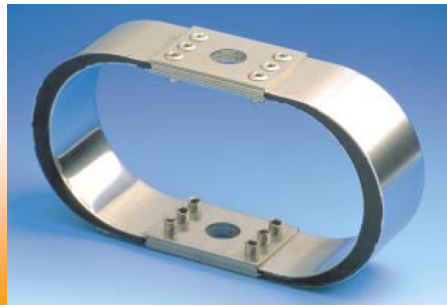


METAL DAMPER ACC-XMOUNT/LSM



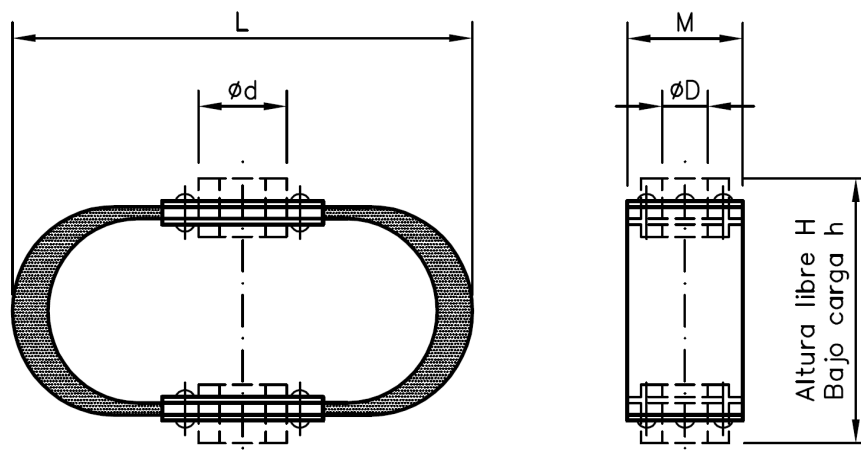
APPLICATIONS

Metal damper for the suspension of machines with speeds starting at 300 rpm, fans, motors, pumps, electronic equipment, compressors, etc.

DESCRIPTION

- Exterior stainless steel with excellent shock absorption capacity and fatigue behavior.
- Its inner composition is visco-elastic resin.
- As option can include decelerator element.
- Natural Frequency: 4 - 10 Hz (Compression).

DIMENSIONAL FEATURES



Part	Nominal Load (daN)	H (mm)	h (mm)	L (mm)	M (mm)	Ø d (mm)	Ø D (mm)
ACC-XMOUNT-LSM-10	10	114,3	106,9	203,2	50,8	31,8	8
ACC-XMOUNT-LSM-20	20	114,3	106,9	203,2	50,8	31,8	8
ACC-XMOUNT-LSM-45	45	133,3	123,2	215,9	50,8	31,8	12
ACC-XMOUNT-LSM-70	70	133,3	123,6	215,9	50,8	31,8	12
ACC-XMOUNT-LSM-110	110	133,3	124,2	215,9	50,8	31,8	12
ACC-XMOUNT-LSM-180	180	190,5	185,4	297,2	101,6	63,5	20
ACC-XMOUNT-LSM-320	320	190,5	183,4	297,2	101,6	63,5	20
ACC-XMOUNT-LSM-450	450	190,5	184,4	297,2	101,6	63,5	20
ACC-XMOUNT-LSM-450	450	209,6	199,3	365,0	50,8	34,9	3/4