

**METAL DAMPER**  
ACC-9057-01

Nat. Freq. 15-22 Hz



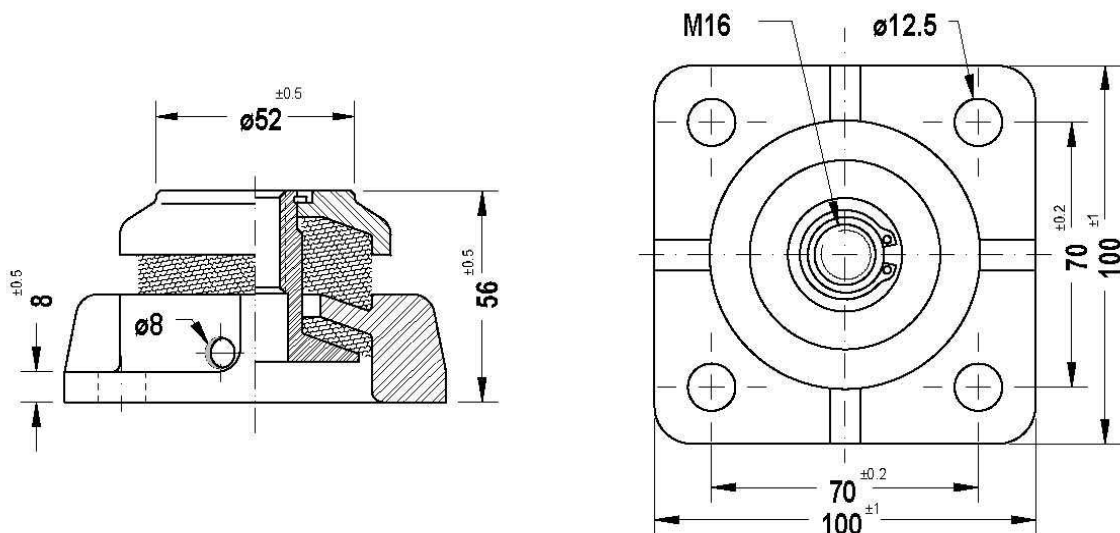
**APPLICATION**

Resilient dampers for engines, pumps, generators, exhaust, medium frequency rotating equipment, marine, industrial and defence uses.

**DESCRIPTION**

- Cast Iron Housing, powder coating and phosphate (KTL).
- Carbon Steel threaded shaft, powder coating and phosphate (KTL).
- Stainless steel mesh cushions, 5% damping.
- Ability to withstand high static and dynamic loads.
- High stability and good mechanical properties.
- Same life time than the equipment.
- Working maximum acceleration up to 20 G. Check dynamic loads.
- Natural frequency 15 - 22 Hz.

**DIMENSIONS**



Type	Static Load (daN) (Kg)	Max. Dynamic Load (daN)	
		Compression	Traction
ACC-9057-01	50-900	3500	2500