

## FLOATING FLOOR ACC-KT



### APPLICATIONS

Execution in floating floors of parking or garages, decks, forges, etc., and as a damping element in applications where there a discontinuity in the construction elements.

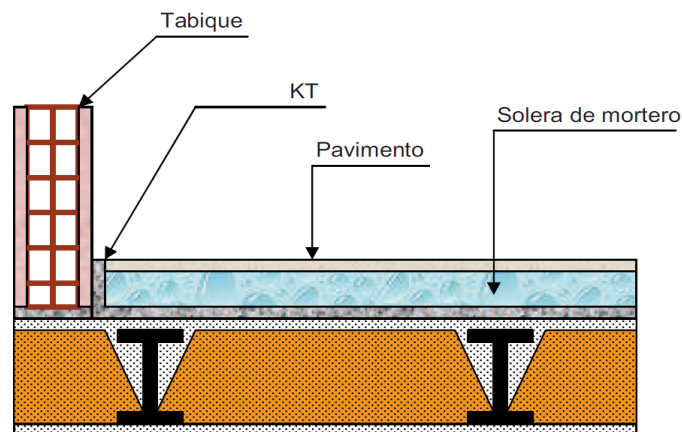
High mechanical resistance confers excepcional properties as a protective waterproof rain cover, etc.

### DESCRIPTION

- Constructed from black specks of color recycled rubber. In rolls of 1,250 mm wide and a length depending on the thickness.
- High mechanical resistance and elongation.
- High resistance to compression.
- Excellent angin resistance and humidity resistance.

### CHARACTERISTICS

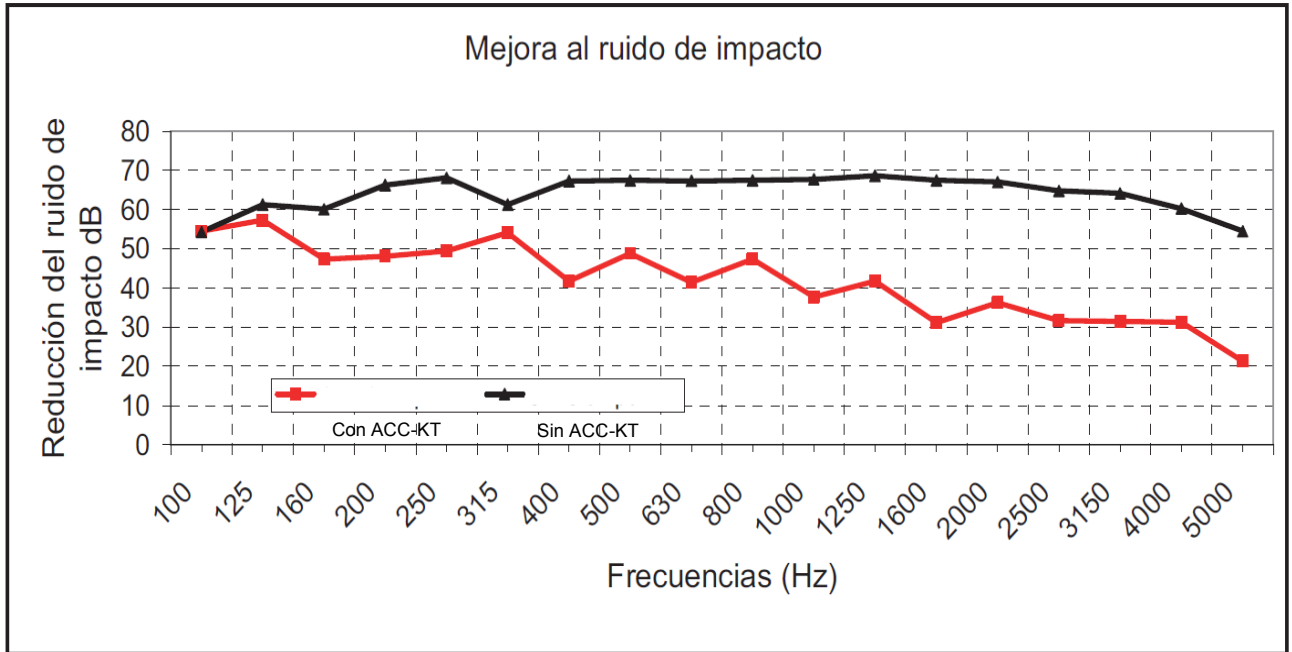
Material:	recycled rubber.
Colour:	black.
Density:	800 kg/m <sup>3</sup> .
Dynamic rigidity:	≤ 90 MN/m <sup>3</sup> .
Thermal conductivity:	λ = 0.08 W/mk.
Elongation:	40%.
Resistance to traction:	0.3 Mpa min.
Working temperature:	-30°C / +80°C.
Sending:	rolls: 1250mm width. Length function of the thickness.
Thickness:	6, 8, 10 y 15 mm.



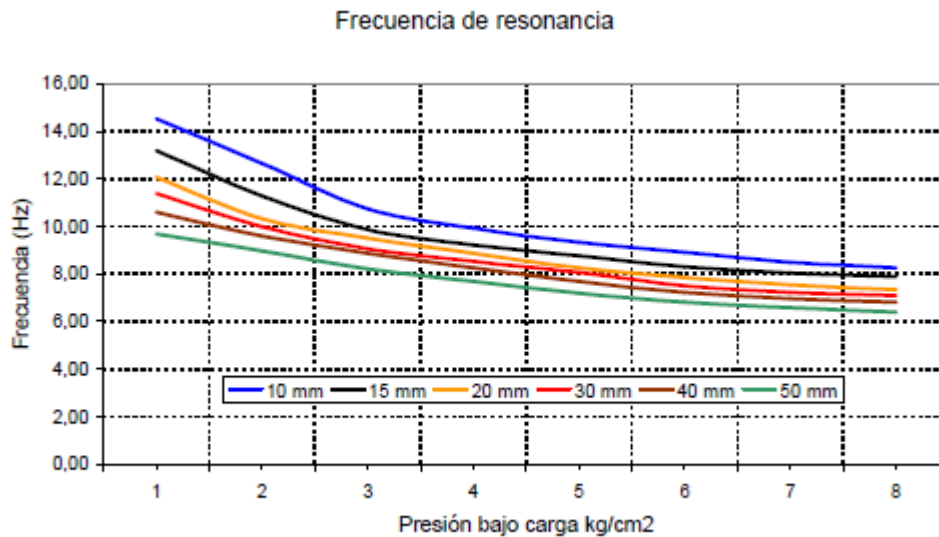
Detalle instalación

**FLOATING FLOOR  
ACC-KT**

**BEHAVIOUR: IMPACT NOISE AND FREQUENCY.**



Mejora al ruido de impacto de una membrana KT 6 y una solera de hormigón de 4 cm de espesor y  $90 \text{ Kg/m}^2 = \Delta L 24,5 \text{ dB}$



**INSTALLATION**

Once the floor cleaned, the rolls will be extended of ACC-KT overlapping about 5 cms in perimeters and cover all the lateral of the slab, depending on the thickness of the slab and the pavement.

Afterwards, will be extended polyethylene film to prevent the leak of concrete between the joints.

Then install the Steel lath. After pour the concrete, finishing with the pavement.